

Note: Key data/information in this sample page are hidden, while in the report they are not.

3 Import and export situation analysis of herbicides in China, 2013

3.1 Overview

Table 3.1-1 Import and export situation of herbicides in China, 2012-2013

Import/Export	Year	Volume ('000 tonne)	Growth rate	Value (billion USD)	Growth rate
Export	2012	█	/	4.5048	/
	2013	█	█	█	█
Import	2012	█	/	█	/
	2013	25.390	█	█	█

Note: The data in the chart include both technical and formulations.

Source: CCM

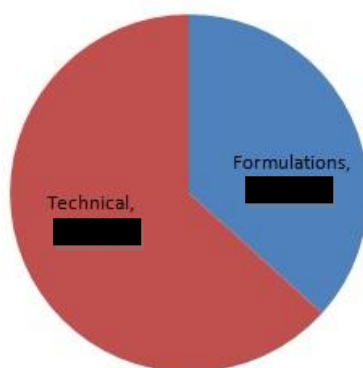
3.2 Technical and formulations

Table 3.2-1 Import and export situation of herbicide technical and formulations in China, 2012-2013

Technical/formulation	Import/export	Year	Volume ('000 tonne)	Growth rate	Value (billion USD)	Growth rate
Technical	Export	2012	█	/	2.8734	/
		2013	█	█	█	█
	Import	2012	█	/	█	/
		2013	2.036	█	█	█
Formulations	Export	2012	█	█	█	█
		2013	█	█	2.3747	█
	Import	2012	█	/	█	/
		2013	█	█	█	█

Source: CCM

Figure 3.2-1 Share of export value of herbicide formulations and technical in China, 2013



Source: CCM

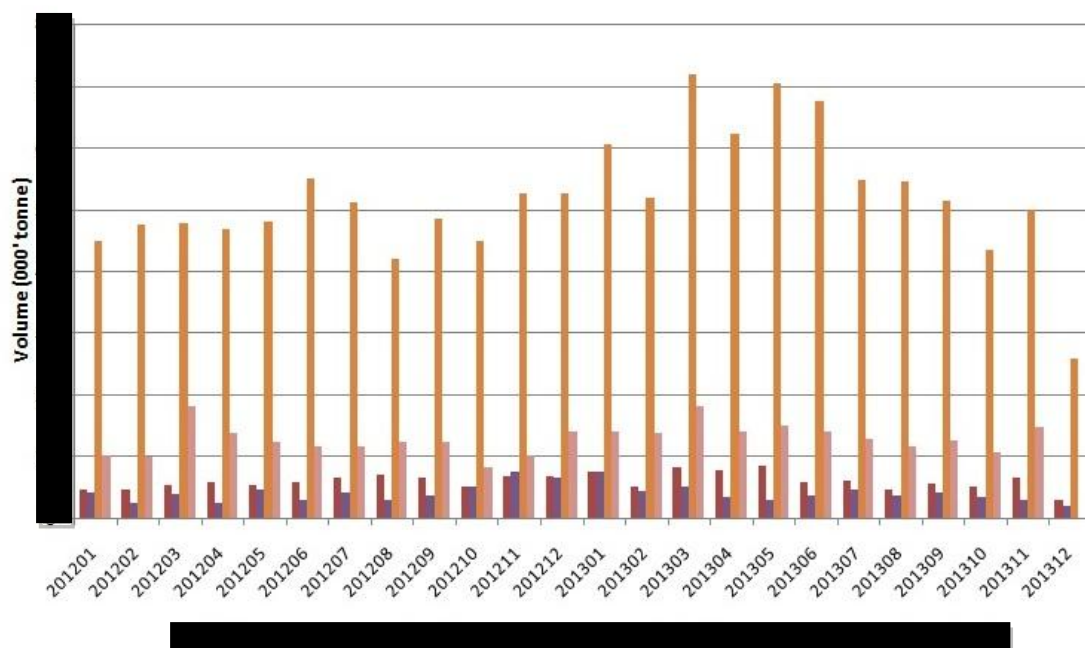
Table 3.2-2 Export situation of major herbicide products in China, 2012-2013

Product	Year	Volume ('000 tonne)	Growth rate	Value (million USD)	Growth rate
Glyphosate	2012		/		/
	2013			2,736.5665	
Paraquat	2012		/		/
	2013				
2,4-D	2012		/		/
	2013				
Atrazine	2012		/		/
	2013	50.0113			

Note: The data in the chart include both technical and formulations.

Source: CCM

Figure 3.2-3 Monthly export volume of major herbicide products in China, Jan. 2012-Dec. 2013



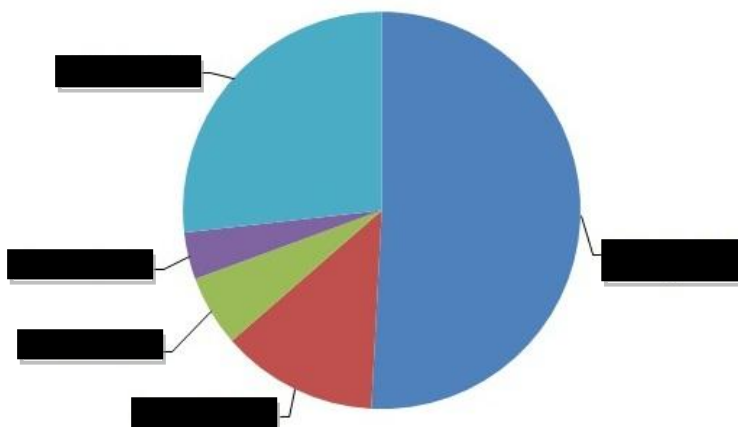
Note: I: The data of paraquat in Dec. 2013 is not available in this chart.

II: The data in the chart include both technical and formulations.

Source: CCM

3.4 Major exported herbicides in China

Figure 3.4-1 Share by export volume of herbicide products in China, 2013



Source: CCM

3.5 Exporters of herbicides in China

Table 3.5-1 Top 30 exporters of major exported herbicides in China, 2013

No.	Company	Value (million USD)	Volume ('000 tonne)
1	Fuhua Tongda Agro-chemical Technology Co., Ltd.	█	█
2	█	298.9081	█
...
30	█	█	5.3531

Source: CCM